



CARDONE[®]

CORE POLICY

CARDONE[®]

5501 Whitaker Avenue
Philadelphia, PA 19124-1799

www.cardone.com
215-912-3000

All cores must be returned in the original box to receive
FULL CORE CREDIT

All cores not returned in the box receive
MAXIMUM 10% CORE CREDIT

Core credit allowed only for units in the current programs
ONLY EXCHANGE CORES ACCEPTED FOR CORE CREDIT

What is a core?

A core is a used automotive part that is returned to the remanufacturer instead of being scrapped.

Why return cores?

Cores are literally at the “core” of the remanufacturing process, because they are the raw material used to start the remanufacturing process.

That’s why remanufacturers buy cores back from customers, and they pay the most for good quality cores. If a core has too much damage in key areas, it may be unusable or require extra resources to process; therefore a reduced core payment may be awarded. This core policy explains potential deductions that may be taken from the core price if certain components are missing or damaged.

What is remanufacturing?

Remanufacturing is the process of taking used parts, completely disassembling and thoroughly cleaning them, replacing the worn components with original quality components, and restoring them to their original function. Every unit is 100% tested to ensure O.E. performance.

Used Caliper Core



Remanufactured Caliper



Why “reman”?

BETTER THAN NEW

Reman captures used, durable goods like auto parts and puts them “back on the road” to new and sometimes better than new performance. It provides the opportunity for detection of common failure modes in original parts and incorporation of design improvements to prevent repeat failure.

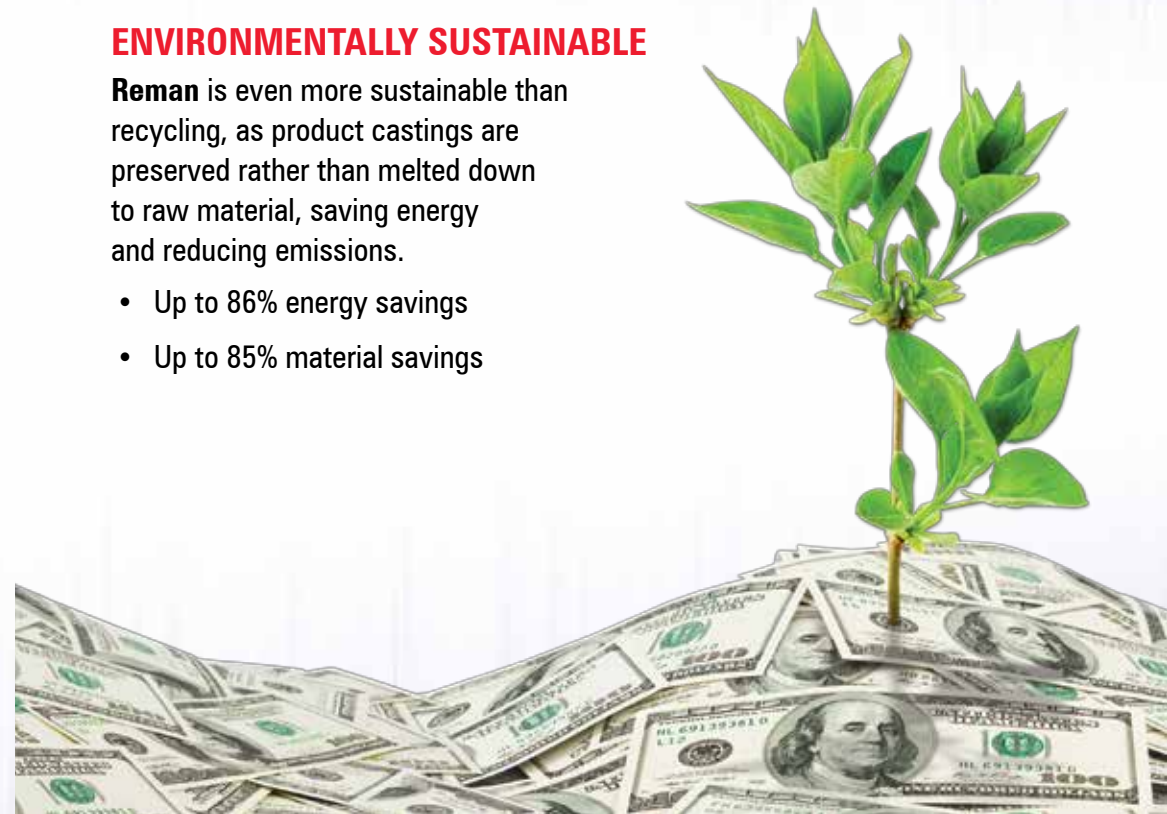
COSTS LESS

Reman products cost consumers about 40% less than new.

ENVIRONMENTALLY SUSTAINABLE

Reman is even more sustainable than recycling, as product castings are preserved rather than melted down to raw material, saving energy and reducing emissions.

- Up to 86% energy savings
- Up to 85% material savings



Thank you for supporting reman by returning your cores in the best condition possible!

CARDONE[®]
engineered for sustainability[™]

ANTI-LOCK BRAKE SYSTEMS

NO CORE CREDIT

- Hydraulic and control units that are broken, cracked or damaged
- Disassembled units
- Missing connector pins on ECU

50% LESS CREDIT

- Missing or damaged electrical motors or accumulators

25% LESS CREDIT

- Cut harnesses or broken connector plugs
- Bent connector pins on ECU
- Missing fittings or bleeder valves, or with fittings or bleeder valves broken off in casting



POWER BRAKE UNITS

ALL UNITS

NO CORE CREDIT

- Units that are worn, broken, scored, damaged, cracked, frozen or rusted
- Incomplete or disassembled

25% LESS CREDIT

- Broken or missing plastic hub

10% LESS CREDIT

- Missing check valve
(See page 19 for a list of part number exemptions on units not supplied with check valve).



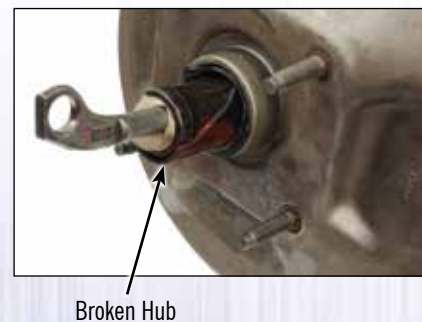
LOADED DOMESTIC AND HYDRO-VAC

50% LESS CREDIT

- All domestic vacuum power brake units returned without the master cylinder/slave cylinder attached

25% LESS CREDIT

- Domestic units returned without master cylinder lids
- Missing pedal rod
- Broken hub



UNLOADED DOMESTIC AND IMPORT

25% LESS CREDIT

- Units returned with missing output rod (between the master cylinder & power brake) and/or missing pedal rod

Missing Output Rod



Broken Pedal Rod



FRICTION CHOICE / BOLT-ON READY CALIPERS

NO CORE CREDIT

- Castings that are worn, broken, scored, damaged, cracked, frozen or rusted

50% LESS CREDIT

- Missing bracket/yokes (where applicable)
- Damaged or missing pistons

25% LESS CREDIT

- Missing hardware or small parts



MASTER CYLINDERS

NO CORE CREDIT

- Castings that are worn, broken, scored, damaged, cracked or frozen
- Disassembled units

25% LESS CREDIT

- Units returned with broken or missing reservoir lids



ELECTRONIC BRAKE UNITS

Electronic Master Cylinder (Non-integral unit)

APPLY SIMILAR CREDIT %

- Must match regular/standard Master Cylinder Core Policy

Electronic Brake Assembly (Integral Units)

90% LESS CREDIT

- Incomplete unit, missing Master Cylinder (Matching Standard M/C Core Policy), Solenoid Block with Electrical Components, Pump, Motor, Accumulator, Reservoir, Metal Tubing, or Pedal Simulator (where applicable)
- Damaged solenoid block cover & plug connection ports

15% LESS CREDIT

- Missing or damaged original reservoir no longer in functional condition



CONSTANT VELOCITY DRIVE AXLES

NO CORE CREDIT

- Disassembled units
- Missing CV joint

50% LESS CREDIT

- Broken shaft



4x4 DRIVESHAFTS & PROP SHAFTS

- Standard core policy rules apply. (See cover page).

REAR AXLES

NO CORE CREDIT

- Broken housings
- Broken or missing axles
- Deformed housing at axle tube ends (outer side facing the axle)
- Holes in the center casting
- Missing carrier bearing caps

50% LESS CREDIT

- Missing brackets
- Missing internals
- Weld repair attempted in the field
- Severe pitting on tubes that penetrate inside the unit

25% LESS CREDIT

- Damaged brackets
- Missing cover/damaged cover



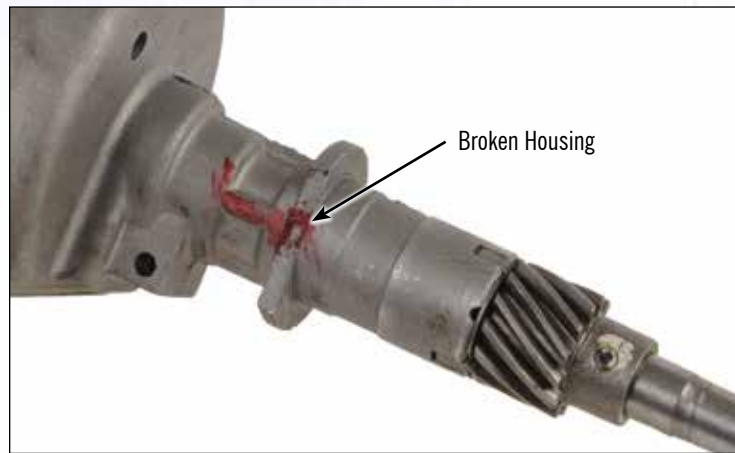
DISTRIBUTORS

NO CORE CREDIT

- Housings that are worn, broken, scored, damaged or cracked
- Disassembled units
- Missing vacuum

50% LESS CREDIT

- Broken plastic housing (30-1636, 1639, 1829, 1878)
- Any shafts broken
- Damaged or missing coil, ignitor or module
- Missing Hall Effect switch
- Missing Fuel Injector harness (30-1800, 1801, 1808)
- Missing Electronic plate (30-3491, 3493)



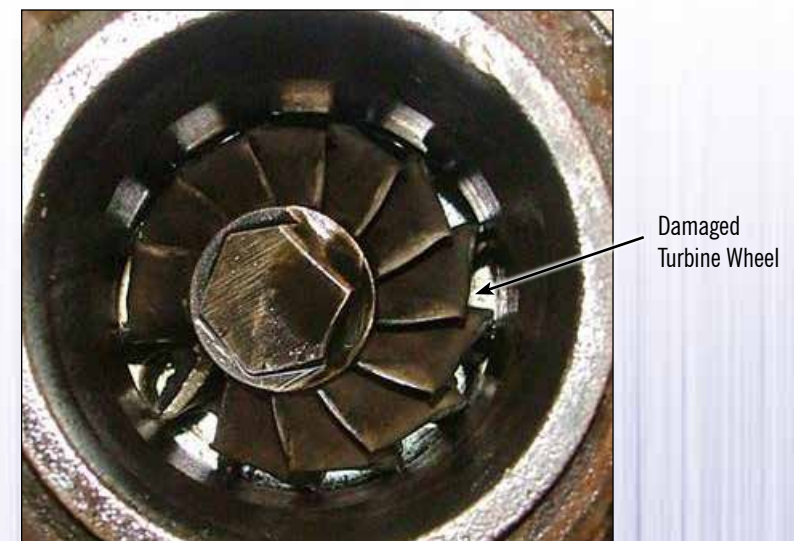
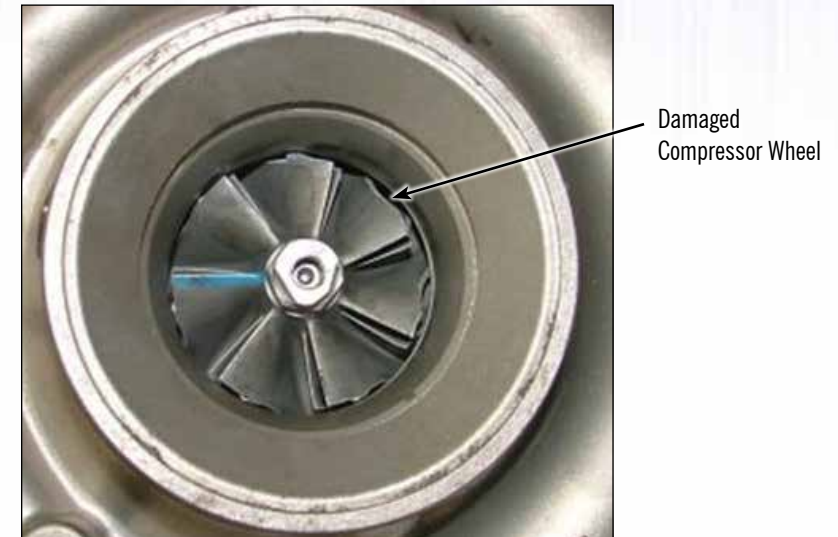
TURBOCHARGERS / SUPERCHARGERS

NO CORE CREDIT

- Missing electronic actuators, sensors, blow off valves, manifolds, turbine and/or compressor housing, units returned with damaged electrical components

90% LESS CREDIT

- Disassembled units
- Cut harnesses or broken sensors
- Obvious compressor or turbine wheel damage
- Obvious external damage or damaged electrical components
- Missing mechanical actuators or waste gate



DIESEL PARTICULATE FILTERS

NO CORE CREDIT

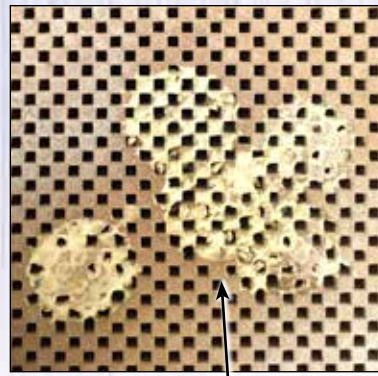
- Broken or cracked ceramic
- Heavily damaged or missing flexpipe
- Large dents in filter housing

50% LESS CREDIT

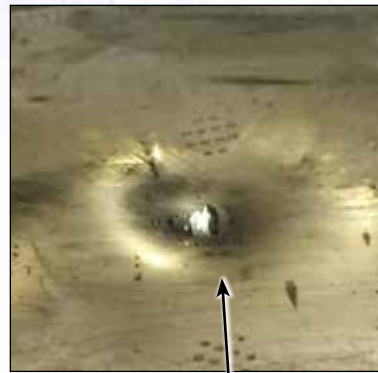
- Missing exhaust hangers
- Missing flanges
- Weld repair attempted in the field

25% LESS CREDIT

- Damaged flanges



Broken or Cracked Ceramic



Dented Housing

DIESEL INJECTORS & PUMPS

NO CORE CREDIT

- Disassembled units
- Bent, broken, cracked, rusted, burnt or water damaged parts

90% LESS CREDIT

- Missing fittings or fittings broken off in casting
- Obvious external damage or missing components
- Cut harnesses or broken/missing actuators, connector plugs, or sensors
- Missing or damaged electrical components

The OEM Service Label must be in place and legible on module units for core credit.

EGR COOLERS

50% LESS CREDIT

- Dented coolant tube
- EGR delete kit installed
- Broken or bent mounting bracket
- Missing mounting threads
- Dented outer housing

EGR VALVES

50% LESS CREDIT

- Broken terminal connector and/or broken plastic parts
- Cracked, broken, burnt or damaged case/can
- Obvious valve exterior damage or missing components



ELECTRONIC MODULES

NO CORE CREDIT

- Cracked, rusted, corroded, fire damaged, water damaged or missing circuit board

50% LESS CREDIT

- Cracked, broken, burnt or damaged case or connector

OEM Service Label must be in place and legible on the unit (see illustration).

TYPICAL GM ORIGINAL EQUIPMENT LABEL REMANUFACTURED



ELECTRONIC THROTTLE BODIES / ACCELERATOR PEDAL SENSORS

NO CORE CREDIT

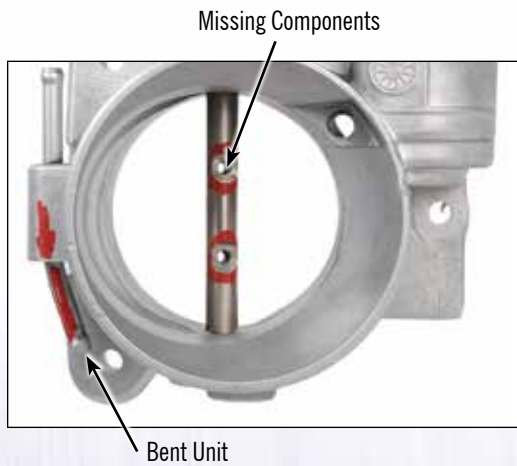
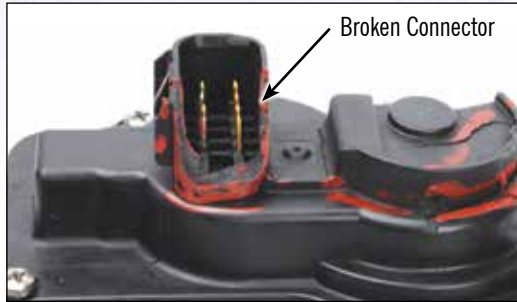
- Cracked, rusted, corroded, fire damaged, water damaged
- Disassembled units

75% LESS CREDIT

- Broken connector and/or broken plastic parts and/or dented cover
- Missing components

50% LESS CREDIT

- Damaged, bent or missing ports



CRUISE CONTROL

NO CORE CREDIT

- Disassembled units

TRANSDUCERS

NO CORE CREDIT

- Housings that are broken, damaged, cracked, frozen or rusted

50% LESS CREDIT

- Missing filter cover

SERVOS

50% LESS CREDIT

- Broken/missing plastic vacuum ports
- Cracked/broken plastic housing or diaphragm base
- Broken or missing terminals
- Damaged or missing bracket
- Damaged, cut or missing harness (Ford units)

MODULES

NO CORE CREDIT

- Cracked, rusted, corroded, fire damaged, water damaged or missing circuit board

50% LESS CREDIT

- Cracked, broken, burnt or damaged case

MASS AIRFLOW SENSORS / VANE AIRFLOW METERS

NO CORE CREDIT

- Crushed, disassembled, water or fire damaged parts
- Damaged or missing module

75% LESS CREDIT

- Screen damaged or broken
- Housing or plastic connector cracked, broken or dented

Cracked Plastic Connector and Housing



HYBRID DRIVE BATTERIES

NO CORE CREDIT

- Tampered with or incorrect high voltage modules

75% LESS CREDIT

- Missing or damaged high voltage modules

50% LESS CREDIT

- Heavily bent or missing sheet metal

25% LESS CREDIT

- Moderately bent or rusted sheet metal
- Missing or damaged battery ECU
- Missing or damaged battery relays
- Missing or damaged blower fan
- Unit returned without original packaging



SMOG AIR PUMPS

NO CORE CREDIT

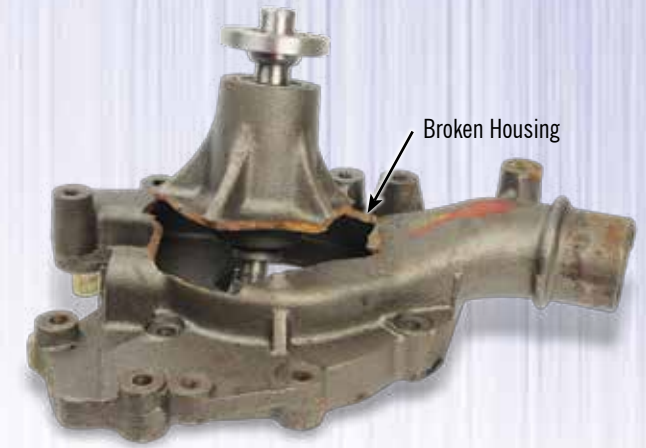
- Disassembled units
- Electronic units with cracked housing



WATER PUMPS

NO CORE CREDIT

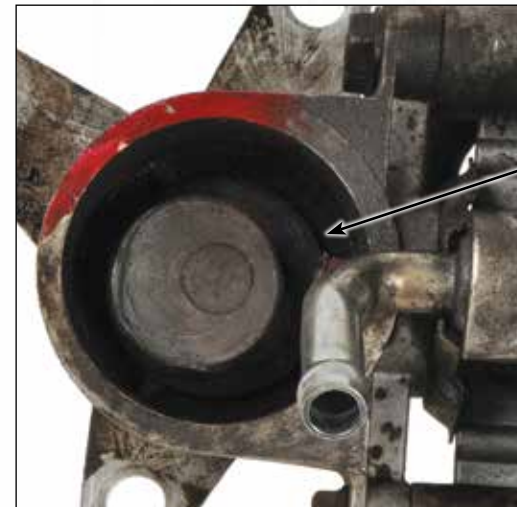
- Disassembled units
- Broken housing



VACUUM PUMPS

NO CORE CREDIT

- Disassembled units
- Broken Housings



ELECTRICAL MOTORS

NO CORE CREDIT

- Housings that are worn, broken, scored, damaged, cracked, frozen or rusted
- Disassembled units
- Missing or broken bracket on all part numbers with an "R" suffix
- Missing or broken linkage on all part numbers with an "L" suffix

50% LESS CREDIT

- Broken terminal connector and/or broken plastic parts
- Broken washer pump cover and/or missing washer pump component parts (40-1681, 40-1682, 40-901, 40-902)
- Broken washer nozzles on rear wiper motors



TRANSFER CASE MOTORS

NO CORE CREDIT

- Housings that are worn, broken, scored, damaged, cracked, frozen or rusted
- Disassembled units

70% LESS CREDIT

- Broken cover (48-201, 48-202, 48-203, 48-204, 48-205, 48-206, 48-207)

50% LESS CREDIT

- Broken terminal connector and/or broken plastic parts

30% LESS CREDIT

- Missing bracket

POWER STEERING PUMPS

NO CORE CREDIT

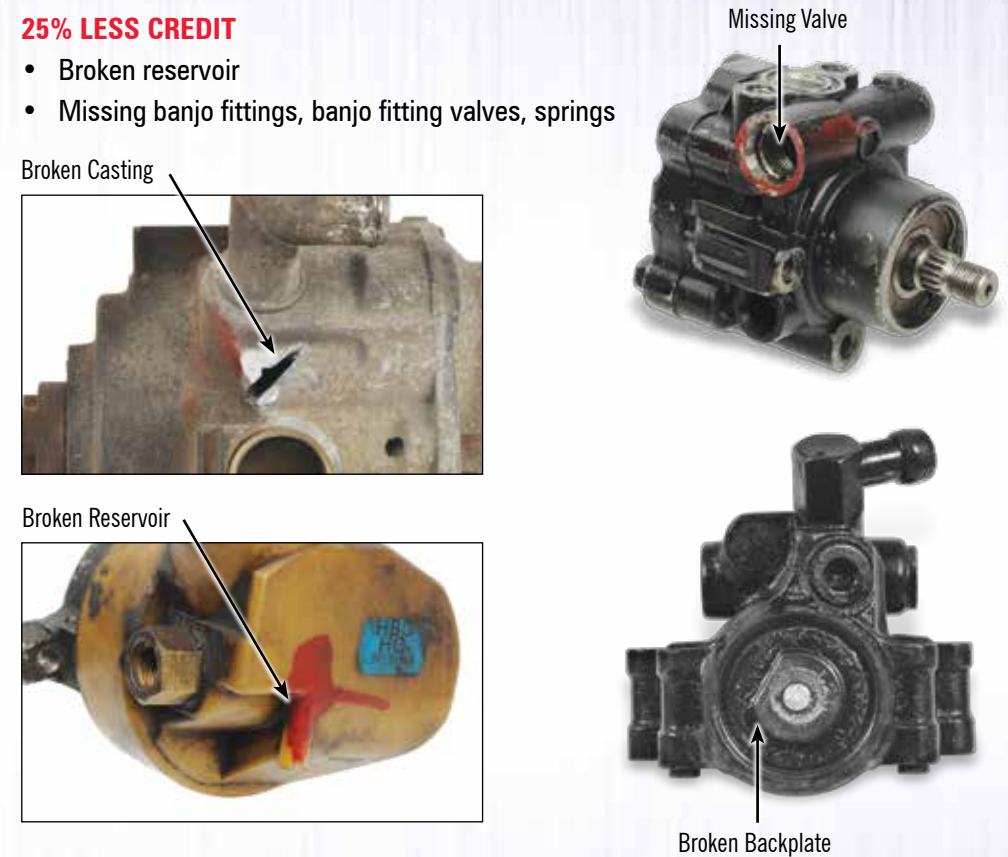
- Completely disassembled core or broken casting

50% LESS CREDIT

- Missing (EVO) Electronic Variable Orifice
- EPS/EHPS (Electro-Hydraulic Power Steering) cores with cut harnesses or broken terminal connector
- EPS cores with broken plastic reservoir

25% LESS CREDIT

- Broken reservoir
- Missing banjo fittings, banjo fitting valves, springs



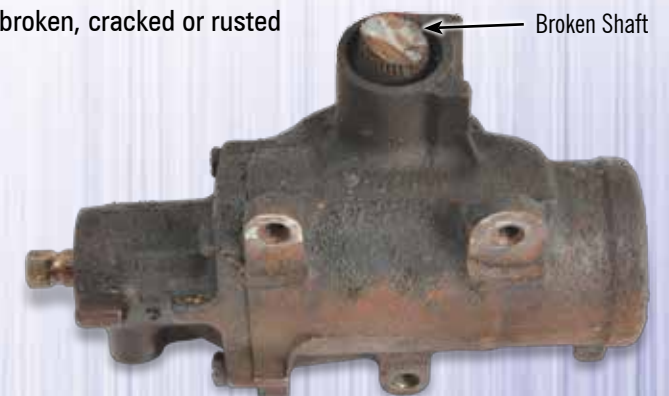
POWER STEERING GEARS

NO CORE CREDIT

- Housings that are worn, broken, cracked or rusted
- Disassembled units

50% LESS CREDIT

- Broken sector shaft
- Broken or missing input valve assembly



RACK AND PINION UNITS

NO CORE CREDIT

- Housings that are worn, broken, scored, damaged, cracked, frozen or rusted
- Bent rack
- Missing rack
- Missing Pinion Valve Assembly
- Disassembled units

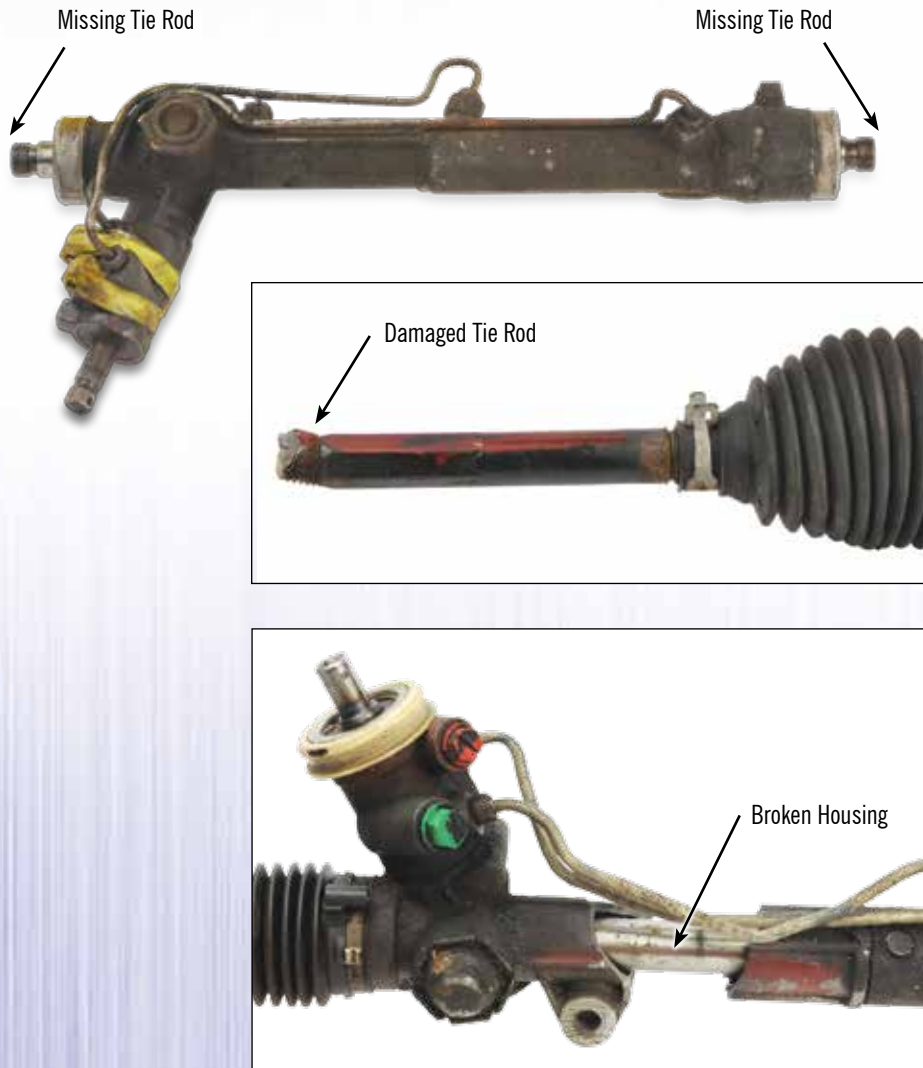
50% LESS CREDIT

- Missing EVO (with "E" suffix)
- EPS cores with cut harness or broken terminal connector
- Missing lines

30% LESS CREDIT (each)

- Missing inner tie rods**

** DOES NOT APPLY TO "SHORT RACK"



POWER BRAKE UNIT PART NUMBER EXEMPTIONS

Units not supplied with check valve

53-2060	53-3006	53-6202	53-8812
53-2601	53-3100	53-6210	53-9300
53-2651	53-3101	53-7002	53-9301
53-2652	53-3102	53-7614	54-71510
53-2653	53-3103	53-7616	54-71515
53-2654	53-3104	53-8008	54-71914
53-2655	53-3105	53-8011	54-71920
53-2662	53-3106	53-8013	54-71923
53-2673	53-3107	53-8016	54-71936
53-2674	53-3108	53-8019	54-71937
53-2681	53-3109	53-8040	54-72002
53-2682	53-3110	53-8050	54-72006
53-2686	53-3111	53-8055	54-72019
53-2860	53-3112	53-8067	54-72020
53-2933	53-3114	53-8074	54-72021
53-2934	53-3115	53-8078	54-72027
53-2935	53-3117	53-8080	54-72028
53-2936	53-3118	53-8081	54-72030
53-2937	53-3119	53-8117	54-72037
53-2939	53-4938	53-8118	54-72670
53-2940	53-4940	53-8124	54-72672
53-2941	53-5210	53-8270	54-72673
53-2942	53-5700	53-8377	54-72674
53-2945	53-5701	53-8386	54-72675
53-2946	53-5708	53-8395	54-72678
53-2947	53-5710	53-8412	54-72680
53-2948	53-5713	53-8425	54-72900
53-2949	53-5717	53-8468	54-72908
53-2950	53-5719	53-8472	54-72911
53-2951	53-5721	53-8492	54-73166
53-2952	53-5730	53-8529	54-74231
53-2953	53-5741	53-8542	54-74232
53-2954	53-5750	53-8603	54-74428
53-2957	53-5830	53-8634	54-74434
53-2958	53-5902	53-8714	54-77042
53-3004	53-5950	53-8811	54-77058